

# How Research Impacts my Farm Business

**Laurence Sexton**  
**Dairy Farmer,**  
**Kilbrittan, Co Cork**

EGF 2018

17<sup>th</sup> - 21<sup>st</sup> JUNE 2018 | CORK, IRELAND



eagasc  
AGRICULTURE AND FOOD DEVELOPMENT AUTHORITY

# Background

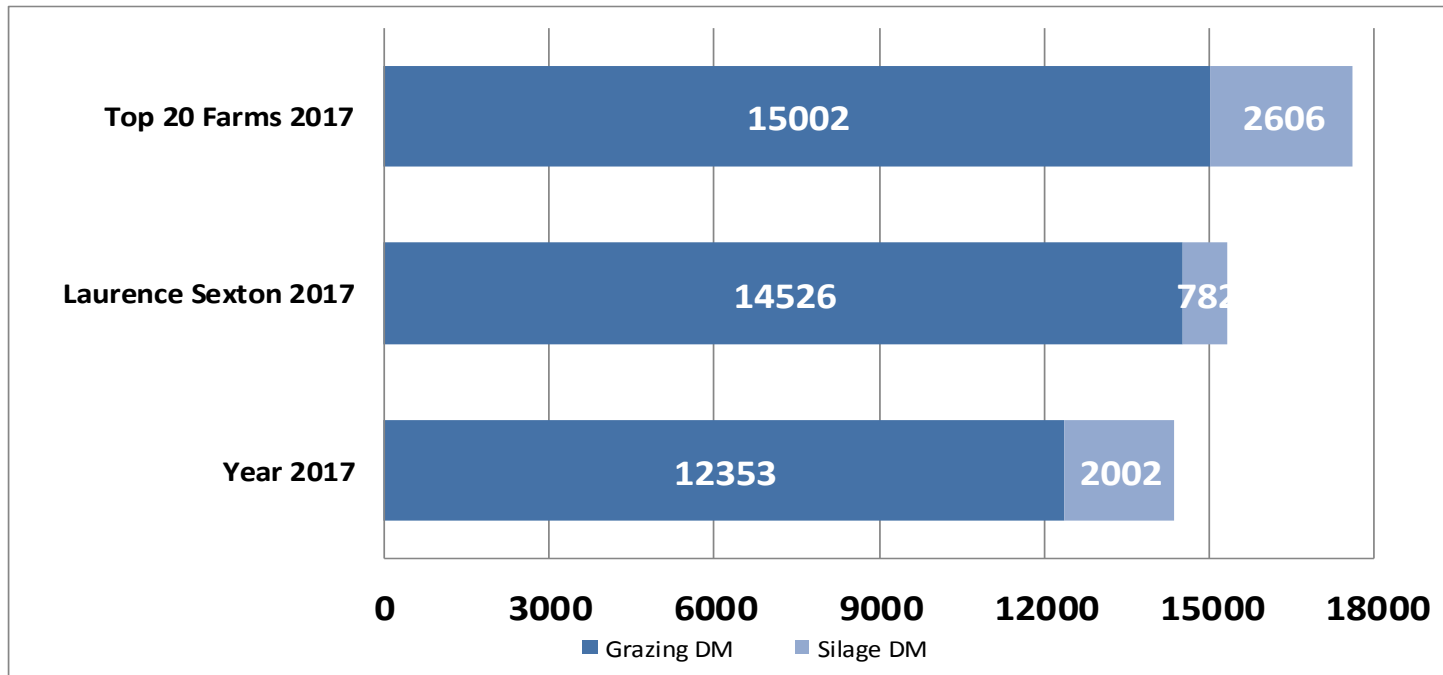
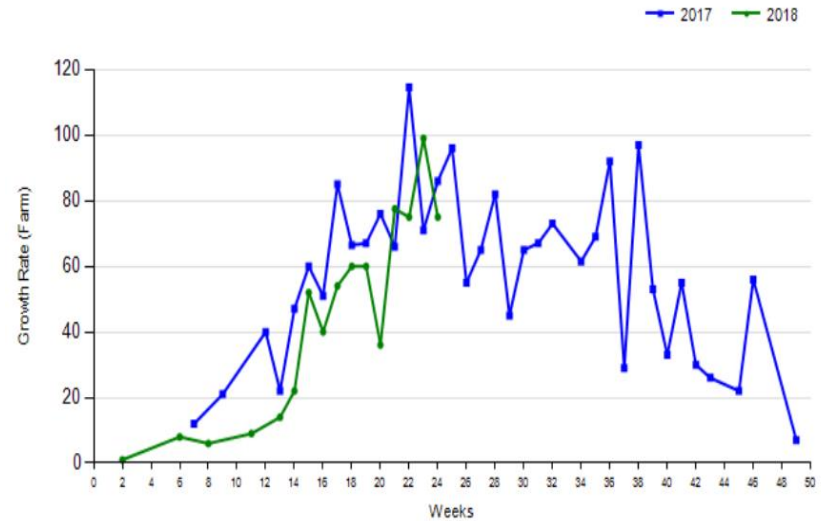
- Three way partnership – LJG Dairy
- Spring calving cross bred herd
- Supplying Barryroe Co-op
- Farming 190 ha
  - 122 ha milk platform
- Cow numbers
  - 2003 – 56 cows
  - 2018 – 405 cows



# Grassland

- Herbage production
  - 2017 – 15.3 t DM/ha
  - 2016 – 15.1 t DM/ha
  - 2015 – 16.5 t DM/ha

Grass Growth Curve 2017 vs 2018



# What's important on my farm?

## Sustainable System

- Animal Genetics
- Grassland
  - Soil fertility
  - Herbage production & utilisation
- Labour
  - Skilled work force
  - Goal - train 4 to 5 students a year
- Finance
  - Milk price/cost of production control
- Lifestyle and Family



# Where do I get my Research information

- Discussion groups
- Co-op meetings
- Research/Demonstration farms
- Open days
- Local Papers
- Conferences
- Text messages/Whatsapp groups



# Research networks used for information

- Pasturebase Ireland
- ICBF
- Co-op reports/App
- Discussion group
- Profit Monitor
- Teagasc Moorepark and Clonakilty
- Irish Grassland Association



# Challenges to Research

- Relevant research
  - short/medium/long term issues
- Research to farm practise
  - more on farm research
- Grazing research at field scale
  - large scale studies
  - multiple years
- Simple clear messages linked to farm sustainability and profit
- Engage farmers at the start of your research – not the end

# What has research changed on my farm

- Grassland measuring and budgeting
- Perennial ryegrass monoculture
- Inclusion of White Clover
- Forage crops
- Crossbreeding
- Partnerships
- Labour - contractor and outsourcing of work
- Milking 13 times a week
- Once a day calf feeding